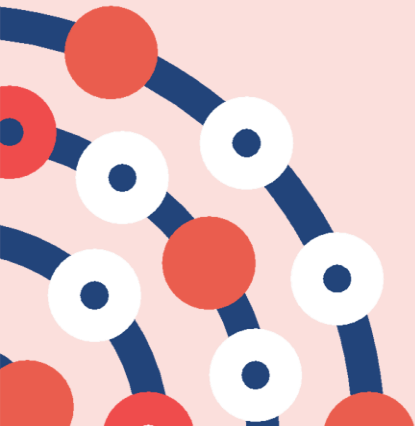




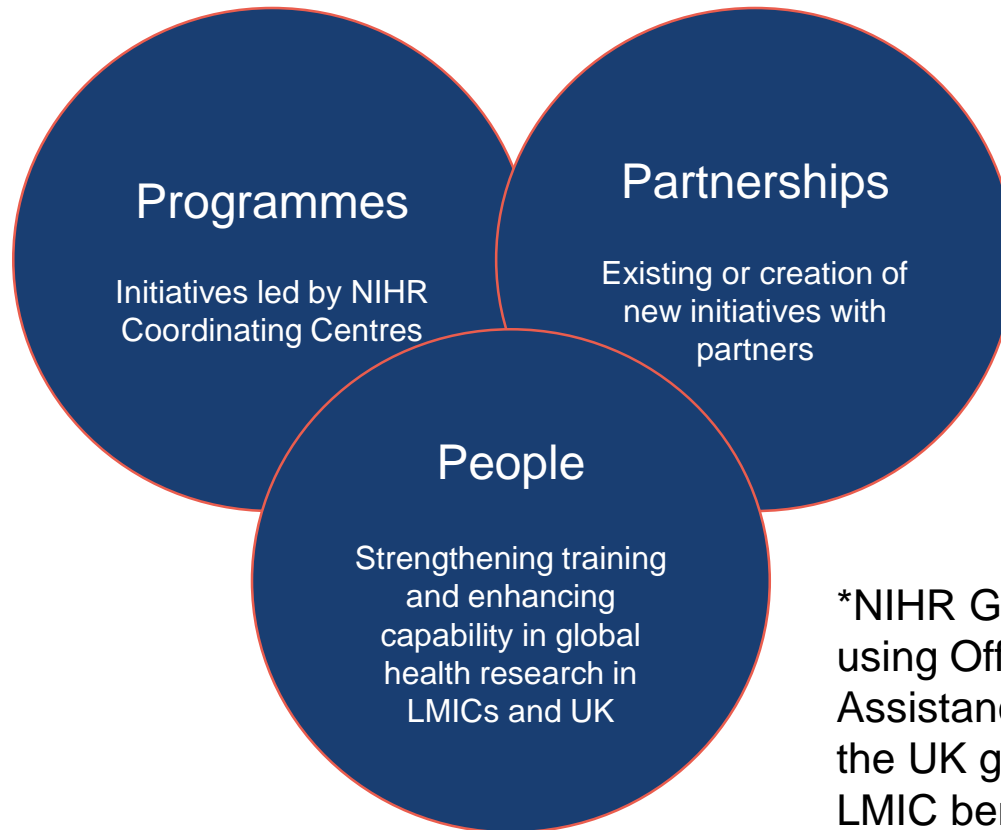
# Community Engagement and Involvement and the NIHR Global Health Research Programme



Doreen Tembo, Senior  
Research Manager,  
NIHR

# NIHR GHR Programme portfolio

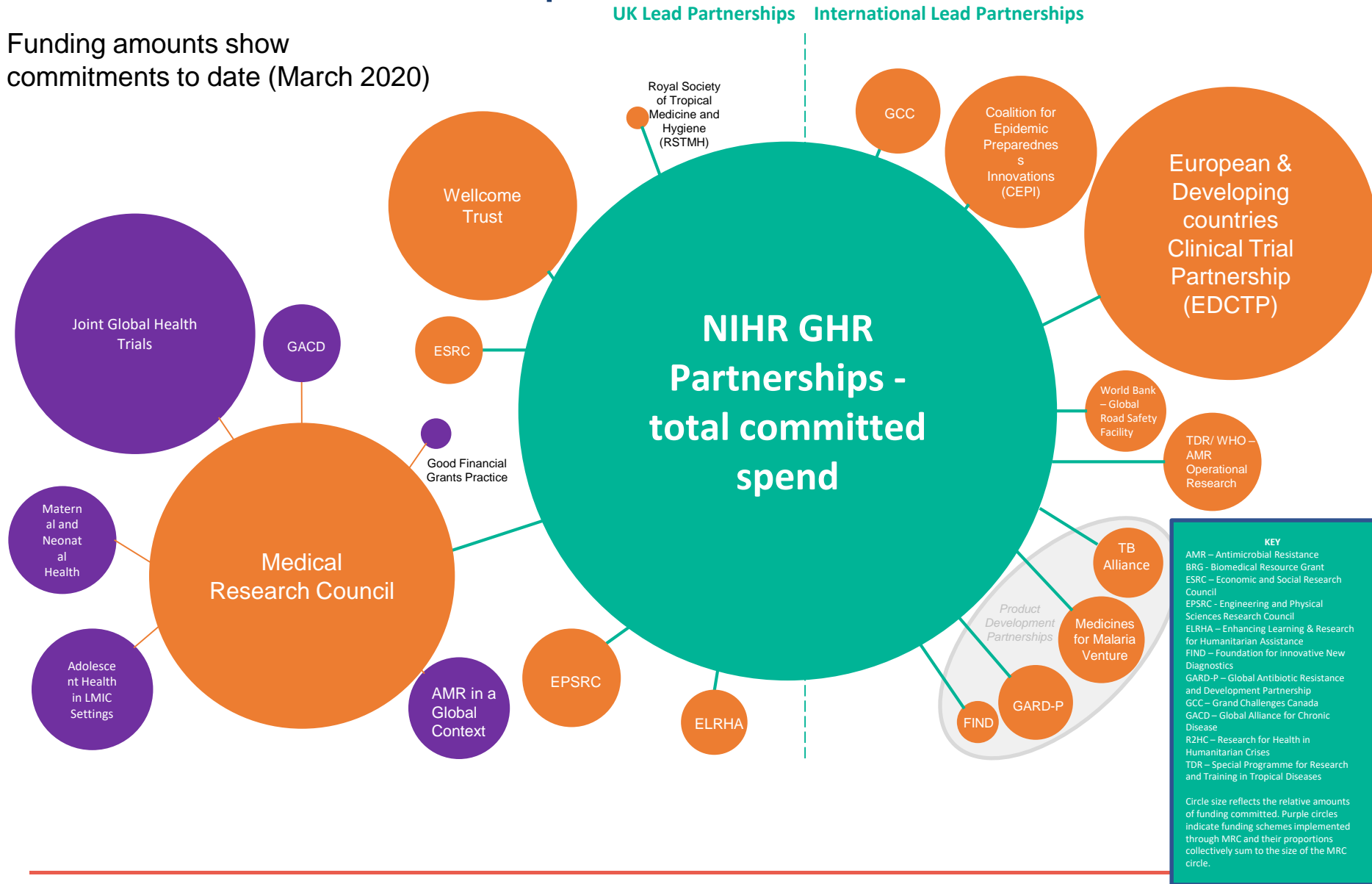
NIHR is a major funder of high quality research that primarily and directly addresses the diverse health needs of people in low- and middle-income countries\* (LMICs), working in collaboration with other global health leaders



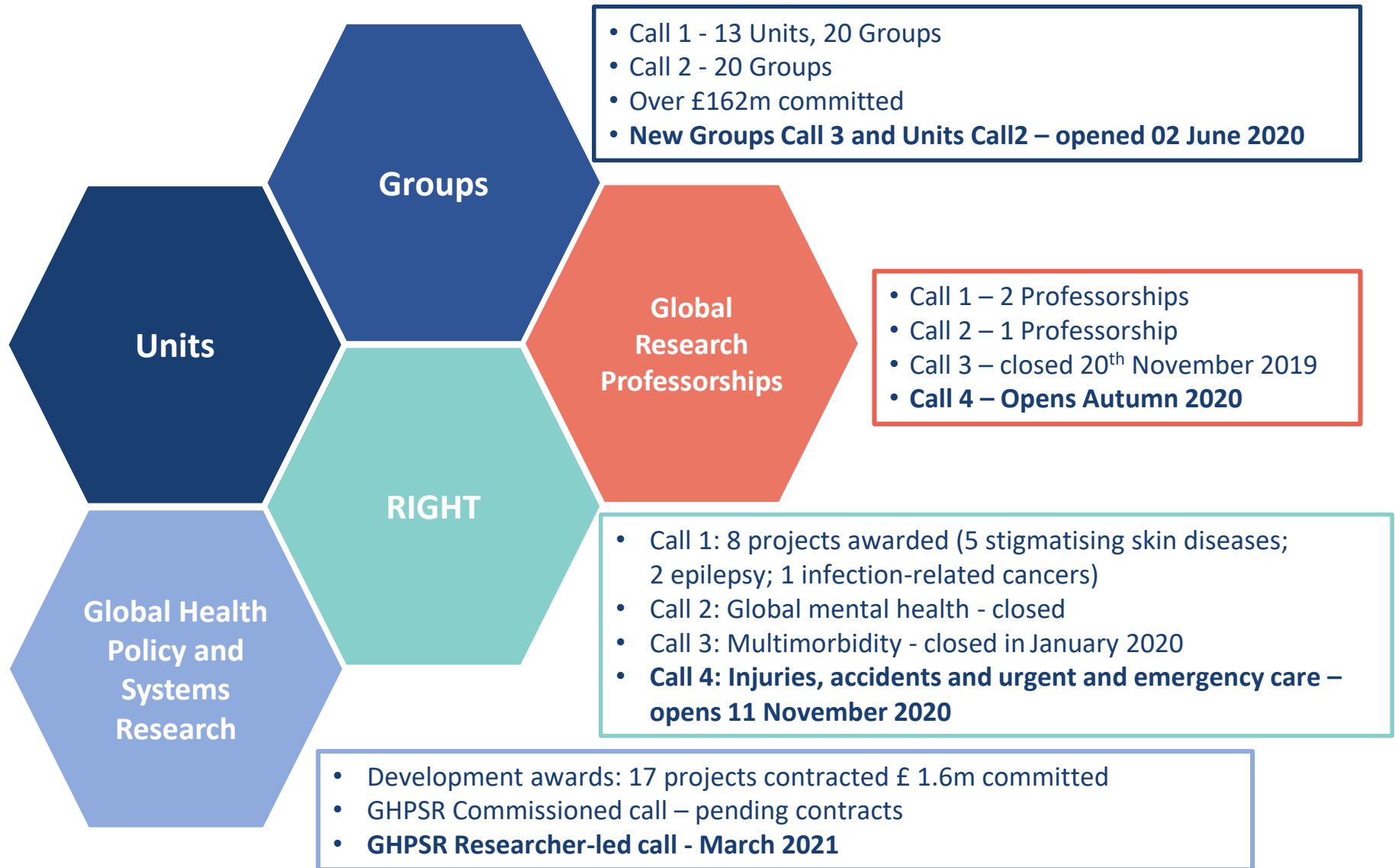
\*NIHR GHR portfolio is funded using Official Development Assistance (ODA) i.e. UK Aid from the UK government. ODA eligible LMIC beneficiaries are listed on the OECD DAC list.

# NIHR GHR Partnerships

Funding amounts show commitments to date (March 2020)



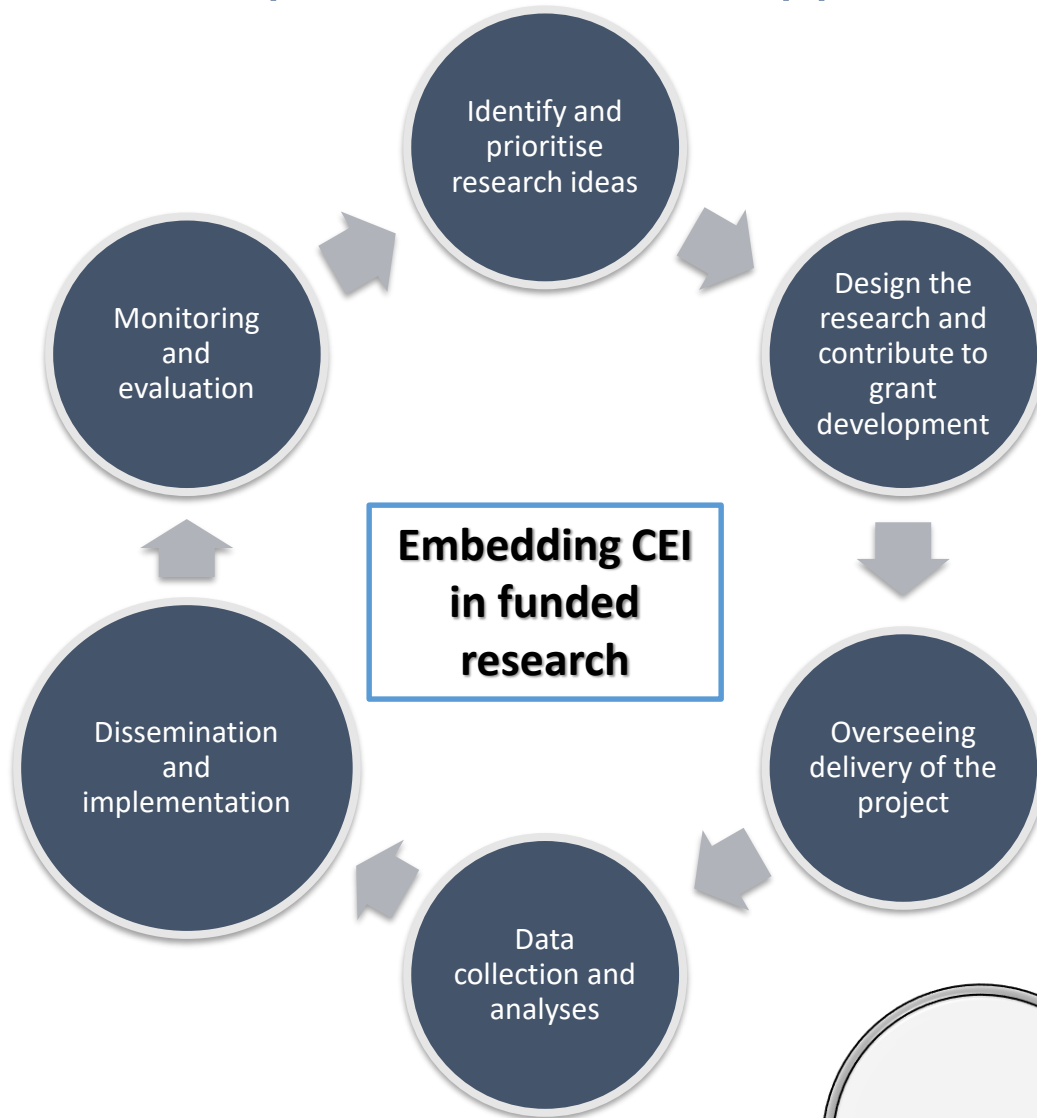
# NIHR Global Health Research Programmes



# “Community Engagement and Involvement”

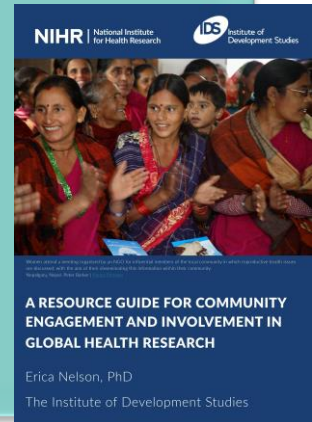


# CEI Expectations and Support

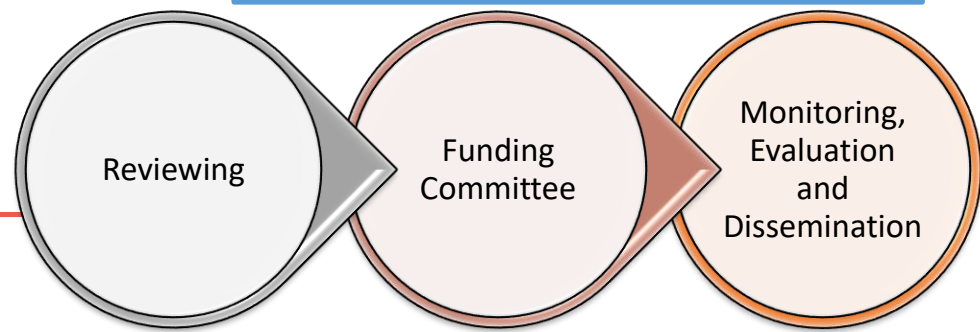


## Support:

- Guidance to applicants
- Funding for teams to carry out CEI especially in the developmental phase



## CEI in NIHR Research Management Processes





The knowledge hub for people working in community engagement with global health research

[www.mesh.tghn.org](http://www.mesh.tghn.org)

Get in touch

[mesh@tghn.org](mailto:mesh@tghn.org)



# Underlying Values, Principles and Standards

NIHR | INVOLVE

Guidance on  
co-producing a research project

- Sharing of power – the research is jointly owned and people work together to achieve a joint understanding
- Building and maintaining relationships
- Respecting and valuing the knowledge of everyone involved in the research
- Including all perspectives and skills
- Reciprocity, everybody benefits from working together



Minimum Quality Standards  
and Indicators for Community  
Engagement

- Participation (involvement)
- Empowerment and ownership
- Inclusion (*“no one is left behind”*)
- Bi-directional communication
- Adaptability and localisation
- Building on local capacity